



# Imperial Polk Genealogical Society

## ETHNICITY DIFFERENCES OF THE BIG 5 DNA COMPANIES

Different DNA testing companies can provide varying ethnicity estimates due to several factors.



Living **DNA**  
YOUR ANCESTRY



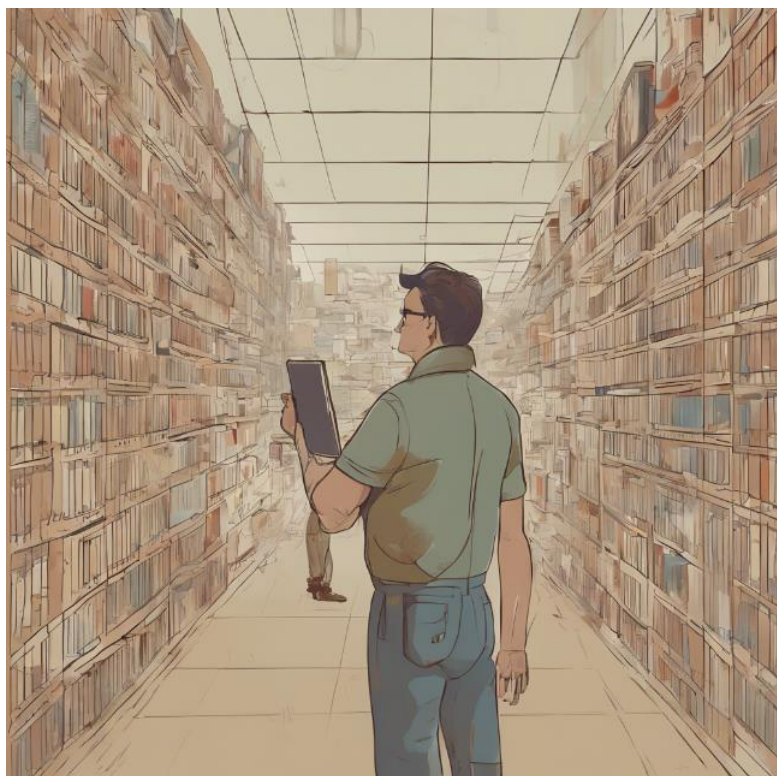
IPGS.org

**Handout for Ethnicity  
Differences August 2024**



## **The reference population is just one of the differences.**

Each company uses its own database of reference populations to compare your DNA. This means the ethnic regions and percentages can differ based on the specific groups they have sampled.



This is the one most of us are familiar with, but there are others.



We will also look at these and one big surprise.

**Algorithm Differences:**

**Chips:**

**Update Frequency:**

**World Region Distribution:**

**Big Surprise:**



The question is, did you ever think there would be such a difference?

BI in the picture below is the British Isles.

Five companies, five different results.

